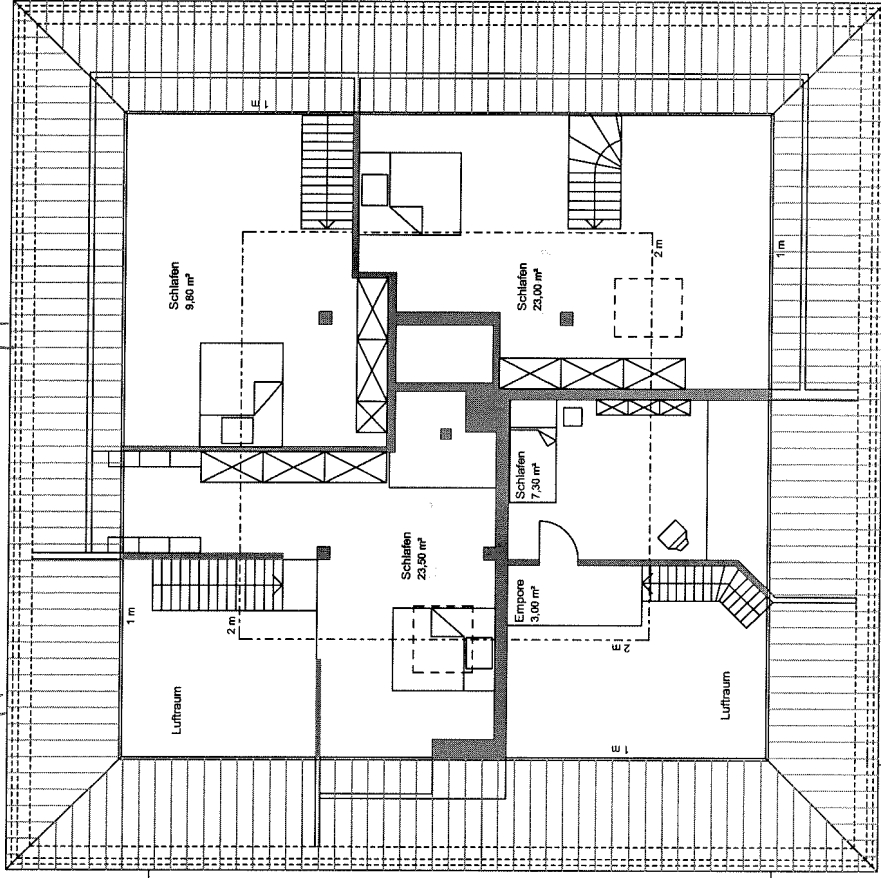


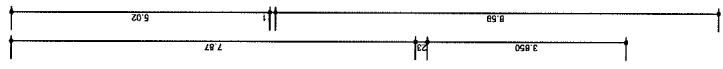
App. 2

App. 3



App. 1

App. 4



BAUTEIL

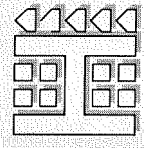
Appartements,
Spitzboden

DATUM

27.09.2006

MASSTAB

1:100



Dipl. Ing.

Michael Hilker
Ingenieure + Architekten

58640 Iserlohn · Weideplatz 12c
Tel. 0 23 71 - 46 01 26 · Fax 46 05 84